

The easiest way to connect, manage, and deploy IoT devices and applications

What is IoTConnect?

Avnet's IoTConnect is a comprehensive solution accelerator software that facilitates IoT device connectivity, real-time monitoring, and advanced analytics. It offers seamless device integration, robust security, and valuable insights for businesses to optimize operations and drive innovation.

With diverse connectivity options, strong data protection measures, and true scaling capabilities, IoTConnect empowers organizations to leverage the full potential of IoT technology and accelerate digital transformation.

Product features



Plug-and-play device connectivity

Easily connect and manage IoT devices without complex configurations.



Advanced data analytics

Gain valuable insights from IoT data through real-time monitoring and customizable dashboards.



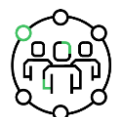
Application accelerators and integrations

Co-solve resources built into IoTConnect. Through APIs, these templates focused on end applications give a prebuilt, free start for any design.



Robust security measures

Industry-standard protocols and encryption mechanisms ensure the security of data transmission and device authentication.



Partner engine capabilities

With the partner engine, products enabled within IoTConnect can instantly have features like subscriptions, billing, and custom package generation with no additional development effort added.



**IoTConnect is built
on the AWS cloud**

**Many major silicon suppliers are
standardizing on IoTConnect to
connect their technologies to AWS**

Why choose IoTConnect

Simplified IoT deployment

IoTConnect offers a user-friendly interface that simplifies the deployment of IoT solutions, enabling businesses to quickly connect and manage devices without complex setup processes.

Scalability and flexibility

With IoTConnect, businesses can seamlessly scale their IoT deployments to accommodate growing needs. The enablement suite supports a wide range of devices and protocols, allowing for flexibility and interoperability across diverse environments.

Powerful data insights

IoTConnect provides robust analytics and data visualization tools, empowering businesses to gain valuable insights from their IoT devices. Real-time monitoring and predictive analytics enable proactive decision-making and optimization of operations.

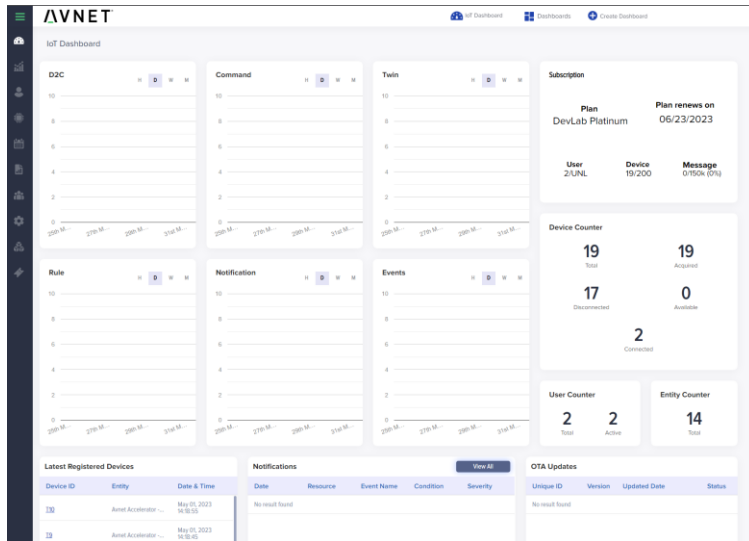
Accelerated time-to market

IoTConnect's comprehensive ecosystem and pre-built solutions reduce the time and effort required to bring IoT products and services to market.

For more information:

Email: IoT@Avnet.com
Website: Avnet.com/IoT

IoTConnect Highlights



IoTConnect Device Management

Dynamic dashboarding

Easily configure the exact metrics and KPIs needed directly within the tool. Generate charts, graphs, and usages markers to fit the exact project need.

Edge hardware accelerators

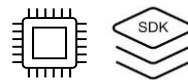
Avnet works with major silicon vendors to provide a best-in-class experience for connecting hardware to IoTConnect. Using our accelerators, devices are simple to bring online to IoTConnect within minutes, enabling jump starts to an design.

Rules management and notifications

Setup custom rules and alerts on metrics of your devices. These rules create notifications that can alert the user from within the tool or via email, text, or through an API integration into a business or mobile application.

Customer success story: Smart asset monitoring

A large manufacturing company worked with Avnet to enable connectivity in their legacy equipment to track both fixed and mobile assets across their manufacturing line. See some of the facets of Avnet's IoT solution engagement below:



Device Onboarding and connectivity

Avnet's IoT team engaged the OEM to help add BT, WiFi, and sensing to existing production equipment. This addition of new sensors reduced product downtime through predictive maintenance.



IoTConnect data and control paths

Through IoTConnect the OEM can now remotely monitor and pass data from the devices into cloud storage. These connection points enabled remote OTAs and job trends logging within the cloud.



Business application development

Avnet recommended a third-party SI who was able to develop a new front-end interface for their business' team deployment needs. This business application enabled managers and dispatchers to have an overall view of current job status and usage metrics.

Avnet Contact information

North America
2211 S 47th Street
Phoenix, Arizona 85034
United States of America
1-800-585-1602

Europe (Silica)
Gruber Str. 60c
85586 Poing
Germany
+49-8121-77702

Europe (EBV)
Im Technologypark 2-8
85586 Poing
Germany
<http://ebv.com/contact>