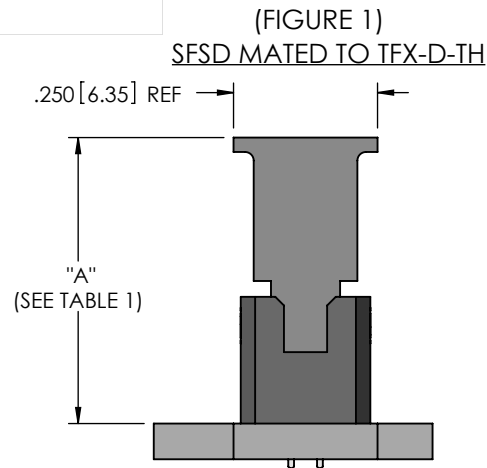


REVISION B

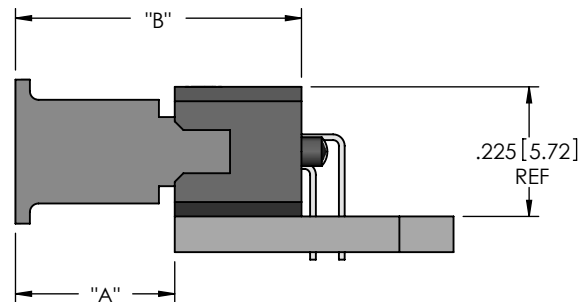
SFSX MATED VIEWS

B	SW	B RAY
12/27/2016	ECN-291946	
ADD FIG 5, TABLE 1: ADD FIG. 5) SFSX / TFM-02-DH ROW.		

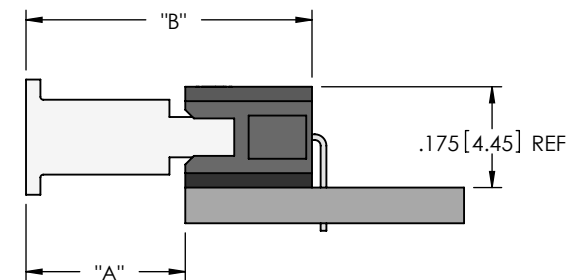
DESIGNED & DIMENSIONED IN INCHES[MILLIMETERS]



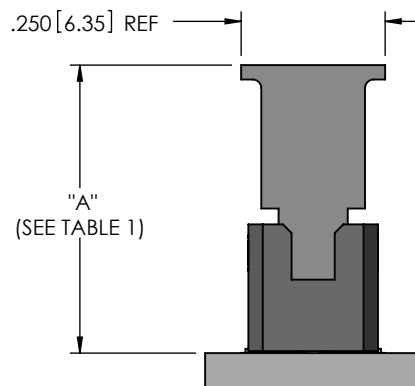
(FIGURE 2)
SFSX MATED TO TFX-D-RA



(FIGURE 3)
SFSX MATED TO TFX-S-RA



(FIGURE 4)
SFSX MATED TO TFX-D-SM



B (FIGURE 5)
SFSX MATED TO TFM-02-DH

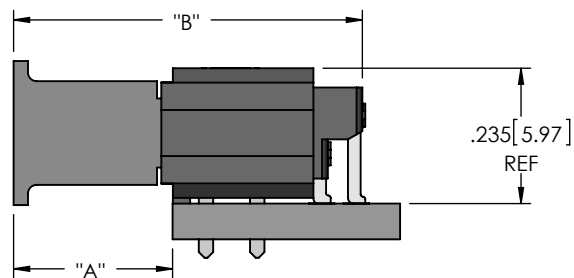


TABLE 2

	Fully Mated Board To Board Dimension ("A")	Max Board to Board Dimension ("A")	Fully Mated Connector To Connector Dimension ("B")	Max Connector To Connector Dimension ("B")	Min Contact Wipe	Max Contact Wipe
FIG. 1) SFSX / TFX-D-TH	See Table 1 for stack heights	=Stack height + .015 [0.381]	N/A	N/A	.015 [0.38]	.030 [0.76]
FIG. 2) SFSX / TFX-D-RA	.277 [7.04]	.303 [7.70]	.497 [12.62]	.523 [13.28]	.015 [0.38]	.041 [1.04]
FIG. 3) SFSX / TFX-S-RA	.277 [7.04]	.303 [7.70]	.497 [12.62]	.523 [13.28]	.015 [0.38]	.041 [1.04]
FIG. 4.) SFSX / TFX-D-SM	See Table 1 for stack heights	=Stack height + .015 [0.381]	N/A	N/A	.015 [0.38]	.030 [0.76]
B FIG. 5) SFSX / TFM-02-DH	.276 [7.01]	.310 [7.87]	.606 [15.39]	.640 [16.26]	.015 [0.38]	.049 [1.24]

TABLE 1: STACK HEIGHTS

	TFX LEAD STYLE							
	-01 (TH)	-02 (SM)	-11 (TH)	-12 (SM)	-21 (TH)	-22 (SM)	-31 (TH)	-32
SFSX	.497 [12.6mm]	.500 [12.7mm]	.567 [14.4mm]	.570 [14.5mm]	.637 [16.2mm]	.640 [16.3mm]	.712 [18.1mm]	.715 [18.2mm]

NOTES:

1. ALL DIMENSIONS BASED ON NOMINAL VALUES FOR SAMTEC RECOMMENDED PCB LAYOUTS.
2. ALTHOUGH MAX DIMENSIONS ARE LISTED SAMTEC RECOMMENDS FULLY MATING COMPONENTS.

PROPRIETARY NOTE
THIS DOCUMENT CONTAINS CONFIDENTIAL AND PROPRIETARY INFORMATION AND ALL DESIGN, MANUFACTURING, REPRODUCTION, USE, PATENT RIGHTS AND SALES RIGHTS ARE EXPRESSLY RESERVED BY SAMTEC, INC. THIS DOCUMENT SHALL NOT BE DISCLOSED, IN WHOLE OR PART, TO ANY UNAUTHORIZED PERSON OR ENTITY NOR REPRODUCED, TRANSFERRED OR INCORPORATED IN ANY OTHER PROJECT IN ANY MANNER WITHOUT THE EXPRESS WRITTEN CONSENT OF SAMTEC, INC.

samtec

520 PARK EAST BLVD, NEW ALBANY, IN 47150
PHONE: 812-944-6733 FAX: 812-948-5047
e-Mail info@SAMTEC.com code 55322